

Enjoy a Free Trial

We are so confident in OneDeploy's abilities to solve all your Windows deployment needs, we are offering free personalised demonstrations in our dedicated demo suite, or demo licenses to take away so you can see how easily it works with your systems. You can request your free trial via www.onedeploy.com

Purchase OneDeploy

For further information about OneDeploy and to discuss the solutions it could provide to you and your organisation, please call:

T: 01462 322159

Want custom Windows deployment across your entire network in 20 minutes?

Talk to OneDeploy



 @onedeploy

 Centrality Ltd

onedeploy.com

FREE TRIAL
SEE REVERSE FOR DETAILS



Unrivalled in ease of use and functionality

OneDeploy is a powerful and versatile Windows deployment solution to standardise your Windows based servers, PCs, tablets, and other devices such as Kiosk or Point-of-Sale, with total flexibility across all devices.

No matter what hardware or form factor you use, however many machines or mobile devices are involved. OneDeploy delivers a fully automated, zero touch, standardised Windows user deployment experience with the following key features:

- ✓ Retain your current hardware, simply upgrade your OS
- ✓ Deliver a universal user experience
- ✓ Compatibility across all versions of Windows software and devices.
- ✓ Unlimited builds per device
- ✓ Reduced deployment cost and time to deploy
- ✓ Reduced upgrade cost and time to upgrade
- ✓ Unique 'zero image' dynamic configuration of systems, drivers and applications
- ✓ Reduced unit cost and increased productivity/less downtime
- ✓ Lifetime support of device - reducing cost but maximising device life.



Why OneDeploy?

OneDeploy has been developed by Centrality, who have over 15 years in IT services, and remain at the forefront of IT services technology, underpinned by a total commitment to the very best in customer service. The excellent long-term relationship Centrality creates with clients is testament to that commitment.

The need to stay ahead with technology use is fundamental for modern businesses to remain competitive and control costs. OneDeploy clients are attaining these benefits, allowing them to achieve consistency across their organisation's entire network, following their exact security, branding and general configuration preferences, regardless of the different devices in use.

OneDeploy Key Benefits

- If you need to configure thousands of new Windows PCs, servers and mobile devices fast
- If you need to strip back your entire hardware estate, ready for a new operating system and configure and install that new system
- If you need to remotely rebuild or repair individual machines.

Customer Testimonial

"With 1,500 devices across our entire organisation, many in remote locations far from our corporate HQ, we struggled to ensure each one met our exact corporate IT standards. OneDeploy allows our IT team to manage all the devices used throughout our business remotely, upgrading and fixing them all at once or individually when needed. This means we can be absolutely sure our customers, wherever they are, have the same NSL service they have come to expect."

Teresa Farndon
IT & Risk Director, NSL Ltd

OneDeploy is the answer

Enterprise-proven, and available with the planning and implementation expertise of its developer, Centrality, OneDeploy gives you the power to get your Windows devices up and running within 20 minutes.

One Solution

OneDeploy was designed and developed for the fast paced day-to-day demands of IT systems in organisations of all sizes.

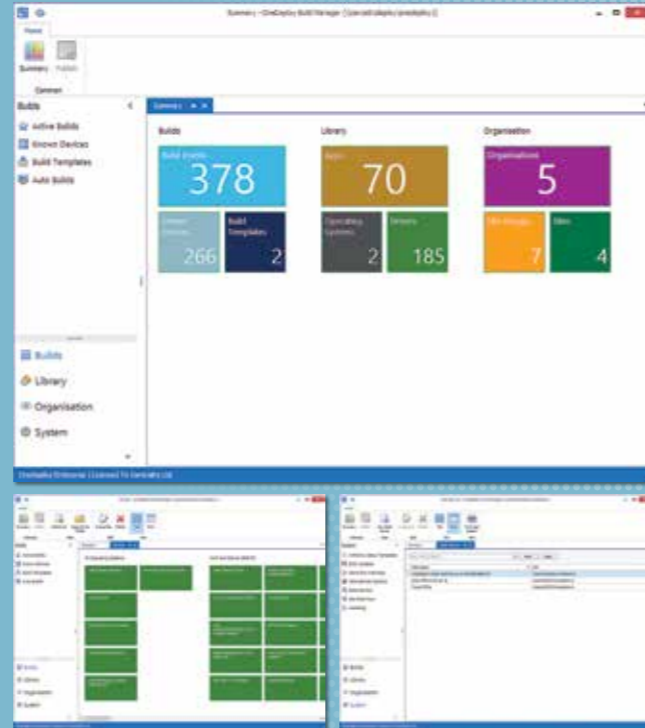
With its release, OneDeploy provides users with a functional software deployment tool with management capability unrivalled by any other system available today.

OneDeploy gives you the power and control to manage all your build designs and deployment scenarios, in a secure and efficient way, by dividing what it needs to do into two distinctive areas:

Design

Each OneDeploy license holder can define all elements of their Operating System in a build template to meet their exact preferences.

The design phase is carried out once only, without any decisions or restrictions about specific hardware. Once the design has been implemented you can then use it to carry out an unlimited number of installations ensuring any new machines follow the same template.



Actual Deployment

After the exact preferences and requirements have been set, OneDeploy takes intelligent control of the build process itself, giving you total control over what has, until now, always been a time consuming and very costly aspect of maintaining your IT resource.

All major parts of the process are seamlessly decoupled from each other, allowing total control and flexibility in installing a wide variety of systems. Exactly how you want them to be.

OneDeploy features

OneDeploy packages each offer a level of service tailored for your business and budget, however the following key elements come as standard:

- No more disk images
- No need to deal with 'gold masters' or reference machines that are quickly out of date
- Your systems will evolve with your business rather than hold it back
- Zero server infrastructure required.

Whether you are an Enterprise, SME or an IT services provider, to find out more about OneDeploy and what licence is right for you, go to:

www.OneDeploy.com

PHASE	SET-UP/DESIGN WORK	ACTUAL DEPLOYMENT
EFFORT	All UI Based	Minimal (if not zero effort)
	→	Target Machine: 1
	→	Target Machine: 2
	→	Target Machine: 3

Save valuable time and energy
Our process (above) versus the competitors (below)

PHASE	SET-UP/DESIGN WORK	PRODUCT USE	ACTUAL DEPLOYMENT
EFFORT	Lots of Work	Minimal Interaction	Lots of Work
	Reference Machine User experience: 1	DEPLOYMENT SOLUTION	→ Target Machine: 1
	Reference Machine User experience: 2		→ Target Machine: 2
	Reference Machine User experience: 3		→ Target Machine: 3



One Support

Technology moves fast and the systems you use today will need deployment solutions that work with the systems you use tomorrow.

To ensure the quality and robustness of OneDeploy, we have a very active R&D Department that tests both software and hardware continuously. This ensures OneDeploy continues to be developed and remains an effective, practical and flexible tool to handle remote operating system deployments, and re-installs across any number of Windows PCs, servers, laptops and tablets.

We pride ourselves in providing our license holders with unrivalled support, recommendations and solutions tailored to their own individual requirements.

OneDeploy System requirements

With a lightweight footprint, OneDeploy only requires DHCP and TFTP services for PXE network booting and a file share for accessing the build library. Alternatively you can boot from USB sticks.*

This means that you can run OneDeploy builds from practically any OS including Windows 7, Windows Server, and even NAS devices.

There are no limitations to the number of licences you can have within your chosen package.

*These services can be provided as part of the install if they do not already exist.

Partner with OneDeploy for maximum control

With competitive advantage and enhanced capabilities for managed services providers and independent software vendors, OneDeploy is THE Windows deployment solution to managing hundreds of clients swiftly and efficiently, with an infinite number of build designs and deployment scenarios.

In addition to its operational benefits to you, with intense competition for managed services contracts, OneDeploy gives you greater ability to manage clients' estates providing you with a valuable edge against your competitors.

How OneDeploy gives you control

With OneDeploy you, as the managed services provider, have full control of driver, application and configuration support, rather than this being held by your clients.

Regardless of how many clients you are looking after, you maintain one, central components repository at your premises, distributing these to each client's PCs in line with their build templates.

If you need to add a new piece of hardware to some or all of your clients' managed builds, you do it once in your repository and then that hardware is supported instantly for all of your clients and all of their builds.

Clients only ever receive the elements from your repository that are specific to them. The membership of the wider portfolio of clients you are managing is invisible.

Becoming a OneDeploy Partner

Becoming a OneDeploy partner includes first class training and marketing materials. Centrality welcomes enquiries about becoming a OneDeploy partner from managed services providers.

Customer Testimonial

"As a managed services provider we needed a 'one-stop' solution to managing the hardware estates on 350 sites across all of our clients. OneDeploy has given us the power to do this in a way we never before thought possible, while retaining each of our individual client's data and integrity. It's streamlined our business and means we can now provide a much more efficient service to our clients, without sacrificing quality."

Alan Page
Technical Director – Leverstock Ltd